

WRESTLING BACK AT THE LAS VEGAS CONVENTION CENTER...

The Twenty-Sixth Annual Cliff Keen Las Vegas Collegiate Wrestling Invitational will be held at the [Las Vegas Convention Center](#). The dates for this year's tournament are November 30 & December 1, 2007.

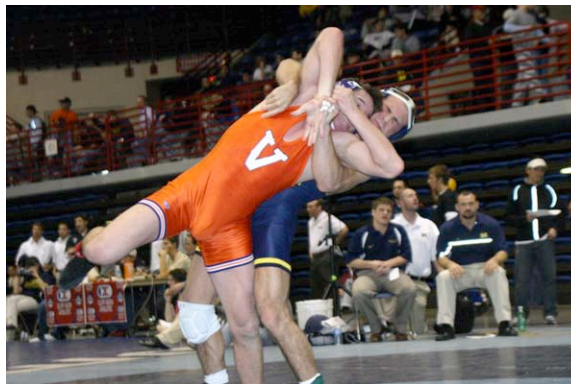
The [Las Vegas Hilton Hotel](#) will serve as the host hotel for this year's event. Wrestling will take place at the Las Vegas Convention Center in Hall N-4 located next door to the Las Vegas Hilton Hotel. A limited number of hotel rooms have been reserved at Las Vegas Hilton Hotel. Please book your reservations by calling 800-732-7117, be sure to mention Collegiate Wrestling Championships.

We look forward to seeing you at the tournament.

Sincerely,

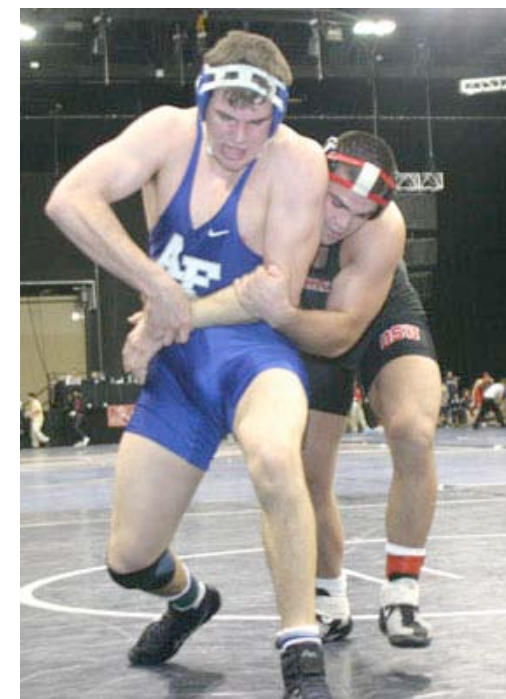
Collegiate Wrestling Championships

Mark B. Churella
Executive Director



Collegiate Wrestling Championships
39500 High Pointe Blvd.
Suite 400
Novi, MI 48375
Phone: 248-348-8200
Fax: 248-348-1697

26th ANNUAL CLIFF KEEN LAS VEGAS COLLEGIATE WRESTLING INVITATIONAL



November 30 & December 1, 2007
Las Vegas Convention Center
Las Vegas, Nevada

**26th ANNUAL
CLIFF KEEN LAS VEGAS
COLLEGIATE WRESTLING
INVITATIONAL**

PLACE: **Hotel:** Las Vegas Hilton
Wrestling: Las Vegas Convention
Center (Hall N-4)

DATE: Friday and Saturday
November 30 & December 1, 2007

WEIGH-IN: Friday, November 30th at 7:00
a.m. and Saturday December 1st at 8:00 a.m. at
the Las Vegas Convention Center. Weigh-in
times and weights are based on NCAA rules.

WEIGHTS: 125, 133, 141, 149, 157, 165, 174,
184, 197, (285) HWT

EXECUTIVE DIRECTOR: Mark Churella
248-348-8200 9:00 a.m. - 5:00 p.m.

TOURNAMENT DIRECTOR: Mark Churella,
Jr. 248-348-8200, 248-675-2246 FAX

ENTRY FEE: \$900.00 per team (10 men max.
per team – one per weight)

Make Checks Payable To:
"COLLEGIATE WRESTLING CHAMPIONSHIPS"

This is not an open tournament. *You are allowed
to enter only the wrestlers that are eligible to
compete for your school. All schools are limited to
one wrestler per weight.*

ENTRANTS' QUALIFICATIONS: All
collegiate entrants must represent a NCAA
institution.

RULES: 2007 NCAA rules - Matches will be
7 minutes with riding time. Double
elimination, wrestle back to 8th place.

TIMETABLE SCHEDULE OF EVENTS

Thursday, November 29, 2007

11:00 - 2:00 p.m. - Registration, Las Vegas
Convention Center

3:00 p.m.- conclusion - Seeding meeting
(Committee members only) Las Vegas
Convention Center

6:00 & 7:30 p.m. - Dual Matches Las Vegas
Convention Center

Friday, November 30, 2007

7:00 a.m. - Weigh-ins, Las Vegas Convention
Center

9:00 a.m. - Pigtail Round, Round 1, Round 2,
Consolation Pigtails & Consolation Round 1

7:00 p.m. - Quarter Finals & Consolation
Round 2 & 3



Saturday, December 1, 2007

8:00 a.m. - Weigh-ins, Las Vegas Convention
Center

9:00 a.m. - Consolation Round 4

10:00 a.m. - Semi-Finals and Consolation
Round 5, Consolation Semi-Finals,
Consolation Finals 5th & 6th, 7th & 8th

5:00 p.m. - CHAMPIONSHIP FINALS
1st & 2nd, 3rd & 4th

AWARDS WILL BE PRESENTED AFTER
EACH WEIGHT CLASS



PLEASE CALL 1-800-828-0759 TO
CONFIRM YOUR TEAMS
PARTICIPATION AT THIS YEARS CLIFF
KEEN LAS VEGAS COLLEGIATE
WRESTLING INVITATIONAL.